

IXPERTA

14. 08. 2024

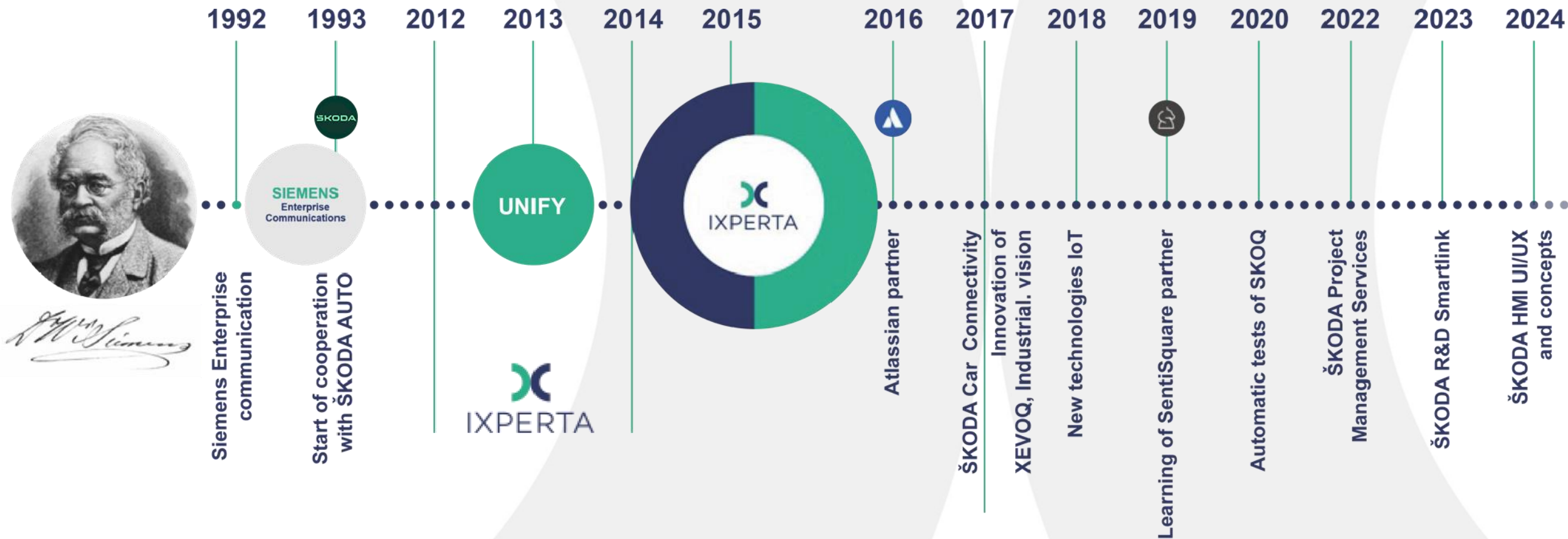
Your gateway to the technological excellence.



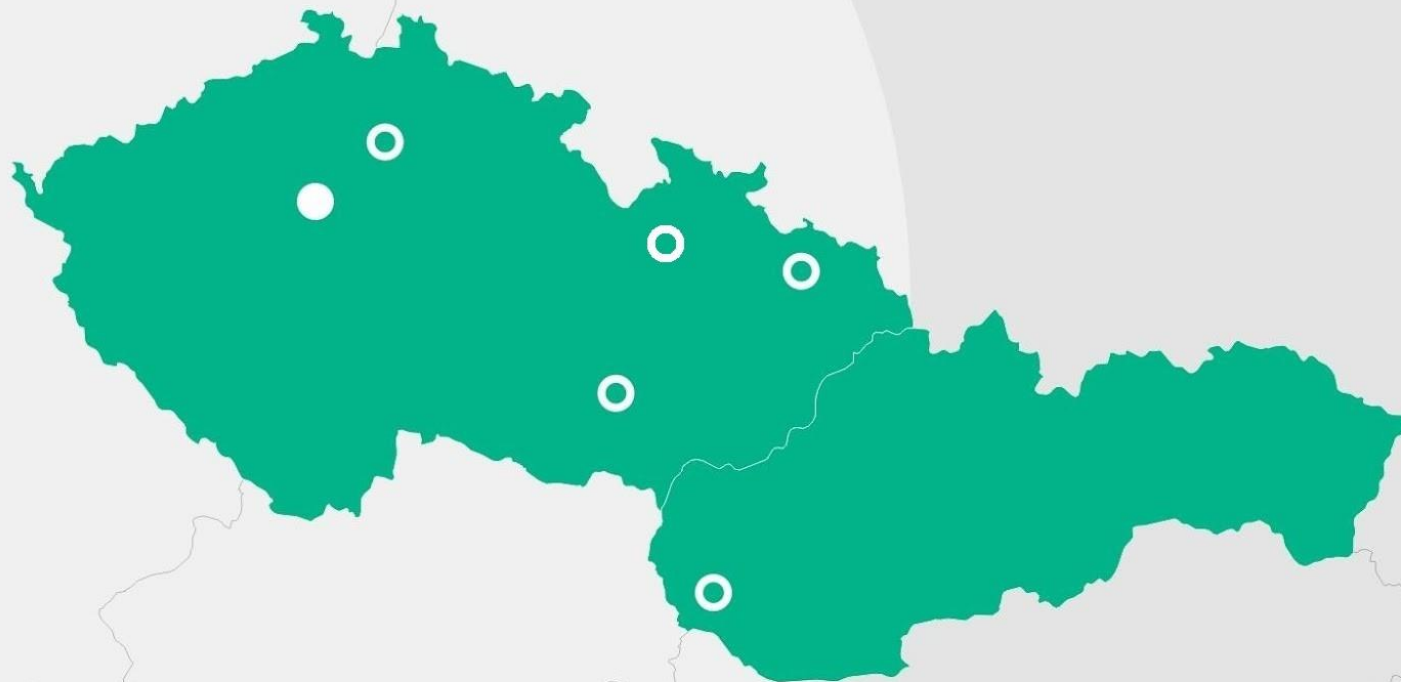
IXPERTA: General overview

- › Czech private company focused on Information and Communication technologies, Services and Software development
- › Vision:
„IXPERTA is a leader among medium-sized IT companies, combining high IT know-how and high flexibility.”
- › Mission:
„IXPERTA connects the worlds of enterprise communications, infrastructure, security and software so you can work on your dreams”





W. Siemens



Current locations:

- › Prague (CZE)
- › Ostrava (CZE)
- › Brno (CZE)
- › Mladá Boleslav (CZE)
- › Šumperk (CZE)
- › Bratislava (SVK)

We are IXPERTA

- › 250+ employees
- › 30+ years experiences
- › 7000+ projects

Annual revenue

- › 38 000 000 EUR

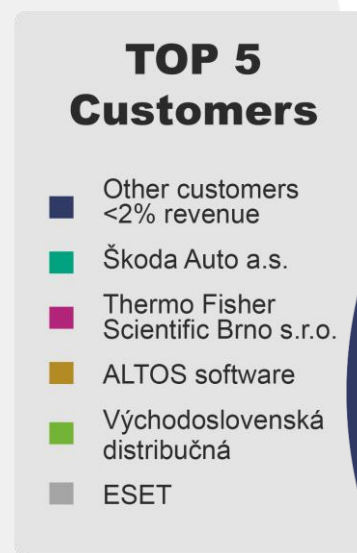
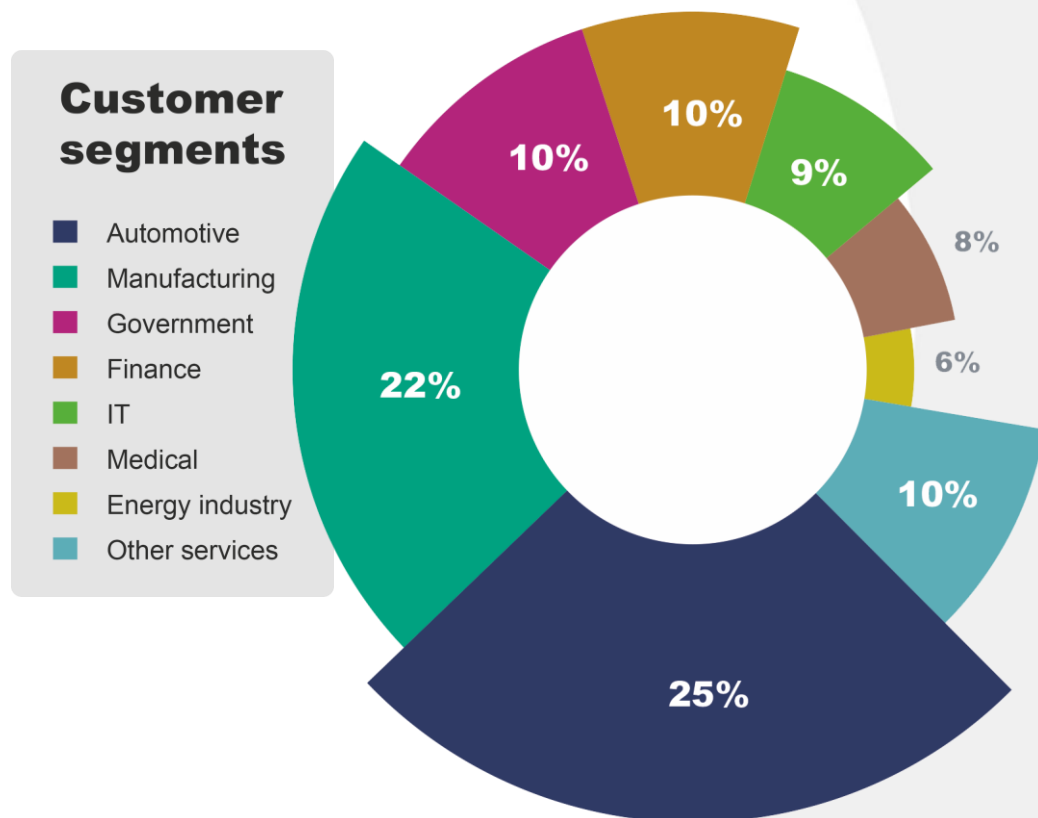
IXPERTA: Company strategy

- › Long-term partnership with key customers
(to provide excellent IT deliveries and services to the limited numbers of key customers)
- › Long-term partnership with world class vendors
(highest partners certificates)
- › Organic growth of all business divisions of the company
(eliminating differences in business cycles)
- › People are the key factor of our success
(hiring the best people on the market, fair remuneration and long-term development)



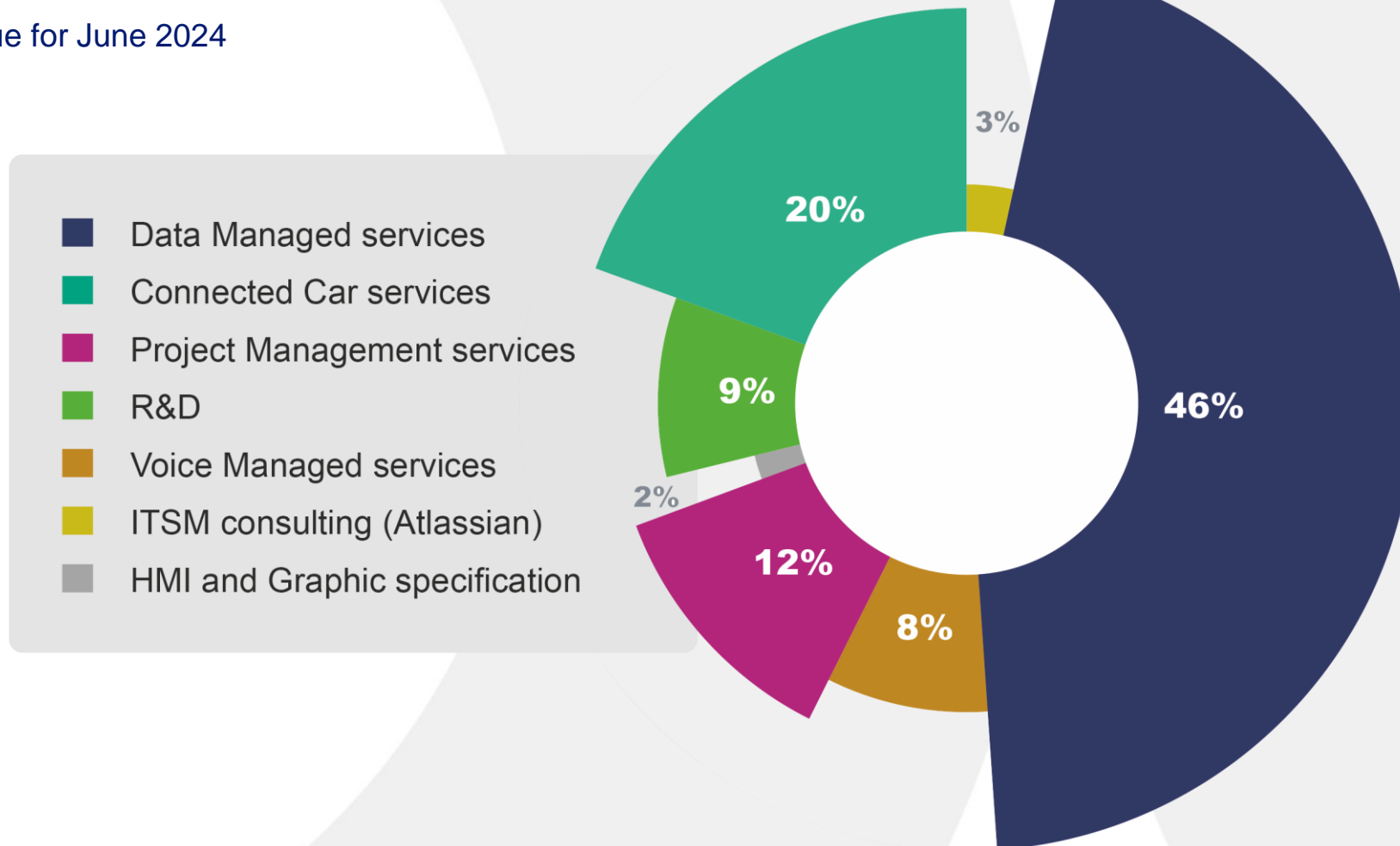
IXPERTA in figures

Expected Revenue 2024: 38 Mio EUR



IXPERTA's services at Škoda Auto

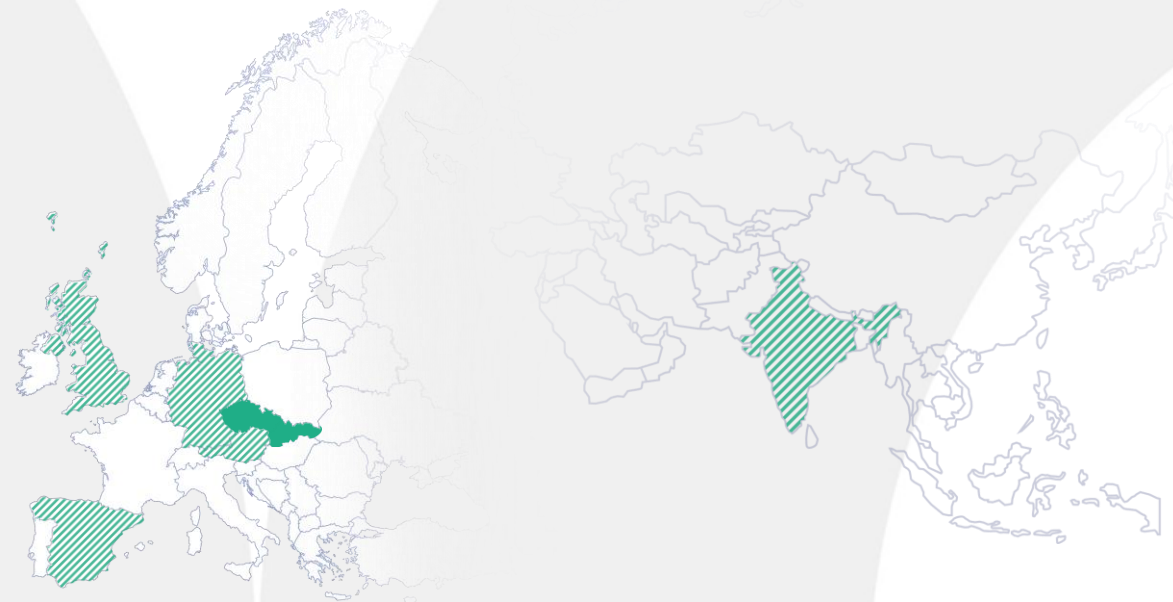
Spited by Revenue for June 2024



Service optimization

Smart shore delivery concept:

- › Key delivery team members by customer
- › Nearshore delivery from Europe Centers of Excellence (CoE)
- › Offshore delivery center (ODC) India



2028

**Established Offices by
AUDI, Porsche, Bentley**

Customers:

- + AUDI, Porsche, Bentley

Delivery:

- Local:
- + new offices
 - + Ingolstadt
 - + Crew
 - + Stuttgart

Near shore:

- + resources in CoE

Offshore

- + resources in ODC

2027

Delivery optimization

Customers:

- + new services

Delivery:

- Local:
- resource optimization

Near shore:

- + resources in CoE
- + new CoE in East Europe

Offshore

- + resources in ODC

2026

Established ODC

Customers:

- + Škoda Auto India

Delivery:

- Local:
- resource optimization

Near shore:

- + resources in CoE

Offshore

- + Established ODC India

2025

**Office in WOB/BWG
Established CoE**

Customers:

- + Cariad, Volkswagen

Delivery:

- Local:
- + new Wolfsburg Office

Near shore:

- Czech republic
- + CoE in Europe

2024

TISAX AL3 Office

Customers:

- Škoda Auto

Delivery:

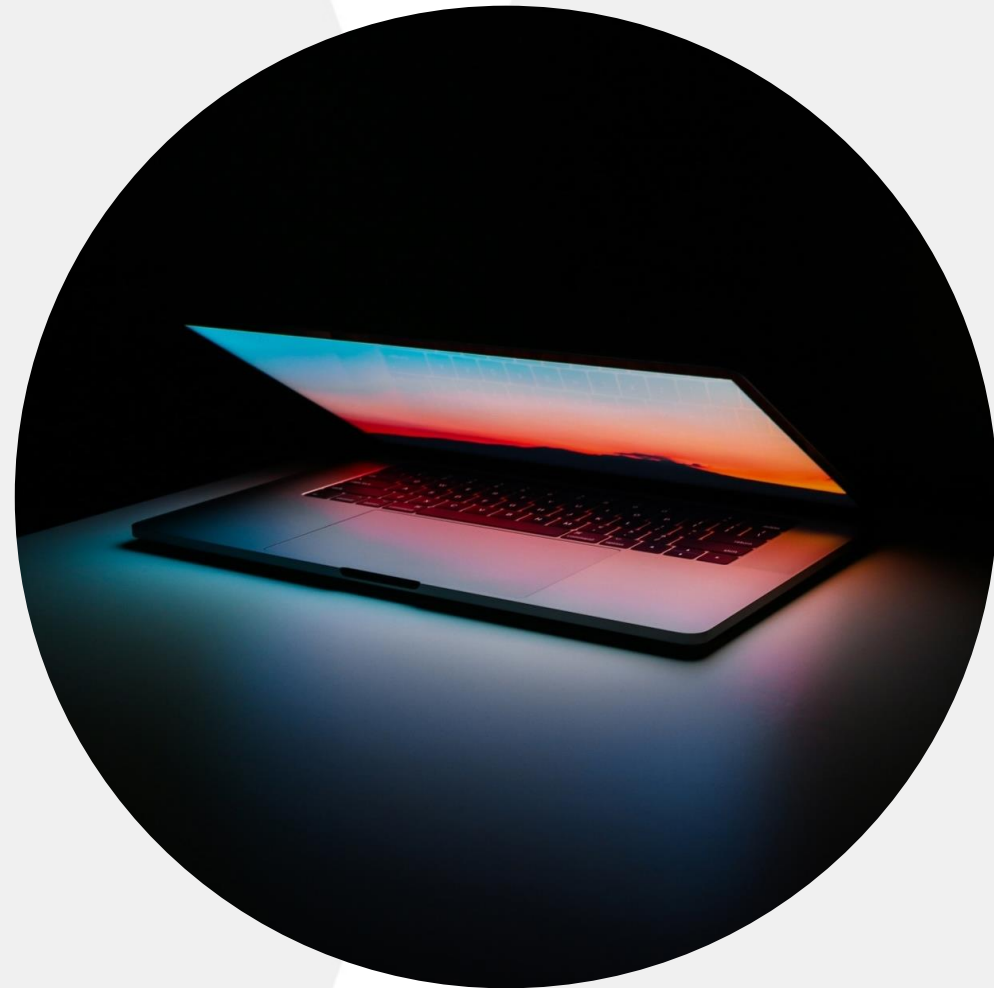
- Local:
- Mladá Boleslav
 - Prague

Near shore:

- Brno, Bratislava



Thank you for your attention



Laurel & Hardy Testing of in car voice control Laura

Size: 4 team members, 2 years project

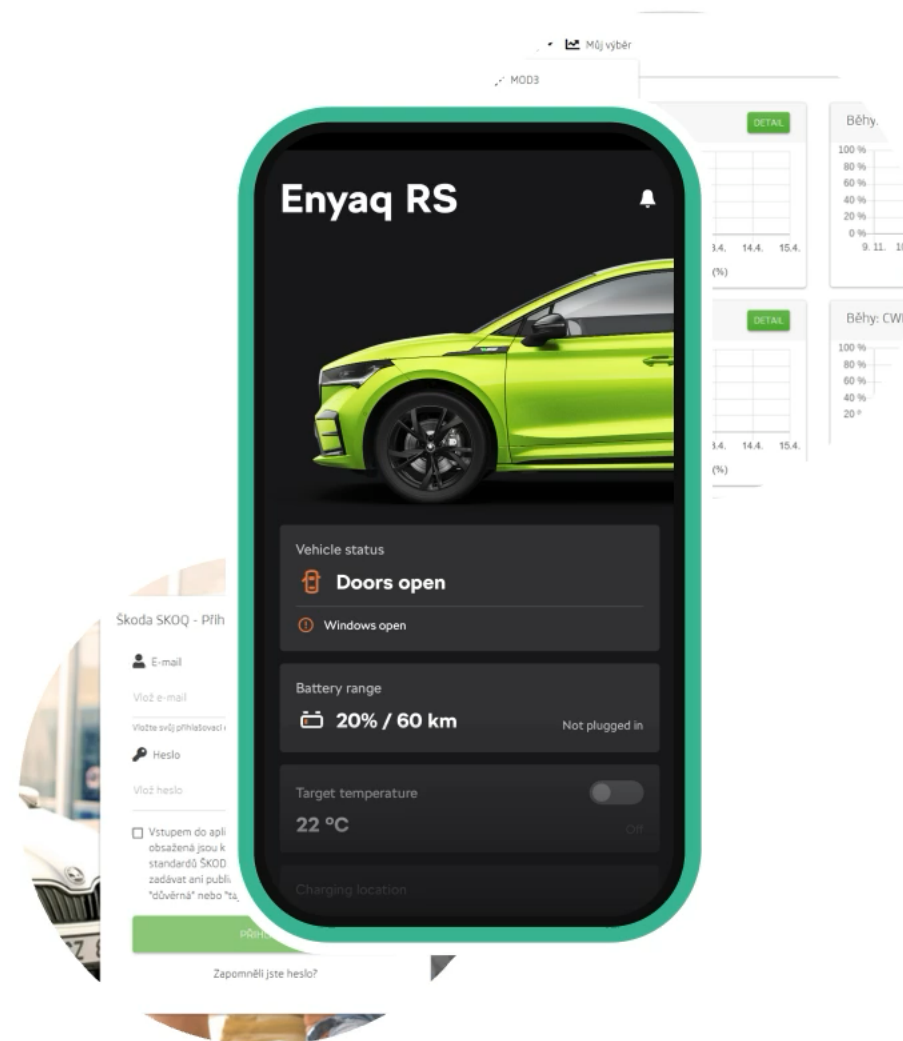
- › Automated solution for testing Škoda in car voice control
- › Validation of Voice control from the user perspective
- › Supporting technical development of System Microphone calibration, Output level test, SPL startup check and auto-level correction
- › Written test phrases converted to speech
- › Automatic multilanguage translation
- › Mixing with background noise
- › Possibility to manage, execute and evaluate the tests from the Škoda EZ-Log quality system



Automated Testing & Monitoring

Size: 10 team members, 6 years project, with the Škoda EED team

- › Service-oriented platform for processing automated tests of Škoda on-line services
- › Connectors to customer environment and systems (TFS, GIT, SC3, B2CSSO, Splunk, etc)
- › Web and mobile app as user interfaces
- › E2E Services Health Check
- › 40000+ test runs daily, 90+ Business services
- › Real Time Monitoring
- › KPI Management Reporting
- › Multibrand solution (SKODA, VW)



Phone Connectivity

Size: 9 team members, 7 years project

- › Complete management of function (module) development (PHONE&APPCONNECT)
- › Implementation Android Auto, Apple CarPlay
- › Supporting successful delivery (BMG) since 2017
- › Covering whole development lifecycle 7+ years
 - › Management of technical documentation
 - › Managing the development function
 - › Apple CarPlay & Android Auto certification
 - › Continuous improvement
 - › Delivery of self certification testing (PCTS, FACET)



Graphic specifications of HMI

Size: 5 team members, 5+ years project (ongoing)

Providing detailed HMI graphic specifications, automated tests, design concepts and validation of graphic resources.

- › Detailed processing of specifications for each display
- › Automated tests of all graphic assets to streamline development
- › Creation of HMI design concepts
- › Creation of interactive HMI models and prototypes
- › Testing graphic assets and validating elements

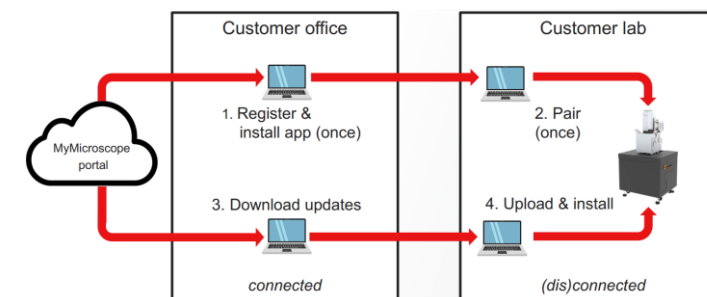
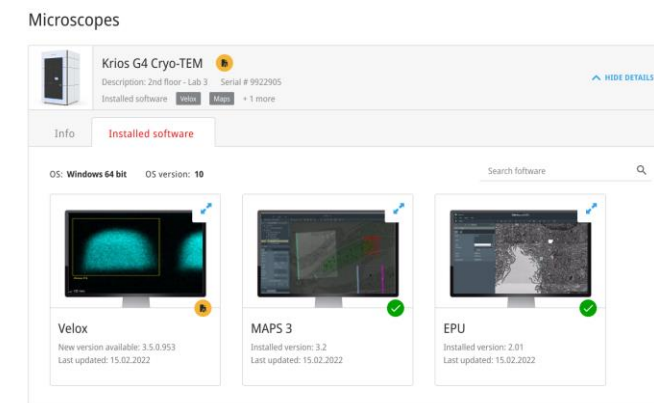
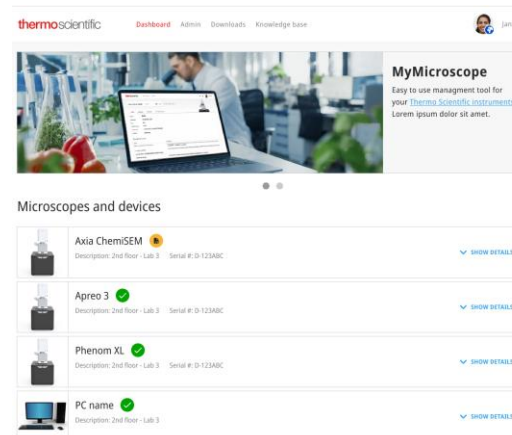


Updating Scientific Device software in an Air-gapped Environment

Size: 12 team members, 3 years project (TOP5 suppliers)

IXPERTA delivers solution to manage remote software updates of high-tech devices in laboratory networks:

- › Management of complex software dependencies.
- › Calculates latest and greatest updates for hardware configurations.
- › Supports update of air-gapped systems in labs.
- › Supports both customer self service and service managed scenarios.



Remote Factory

Size: 5 team members, ½ year project

IXPERTA delivers web-based solution to manage production more efficiently

- › Adds automation in the final production step.
- › Saves floor space, thanks to remote desktop from browser.
- › Reduces production step cycle time by 30%.

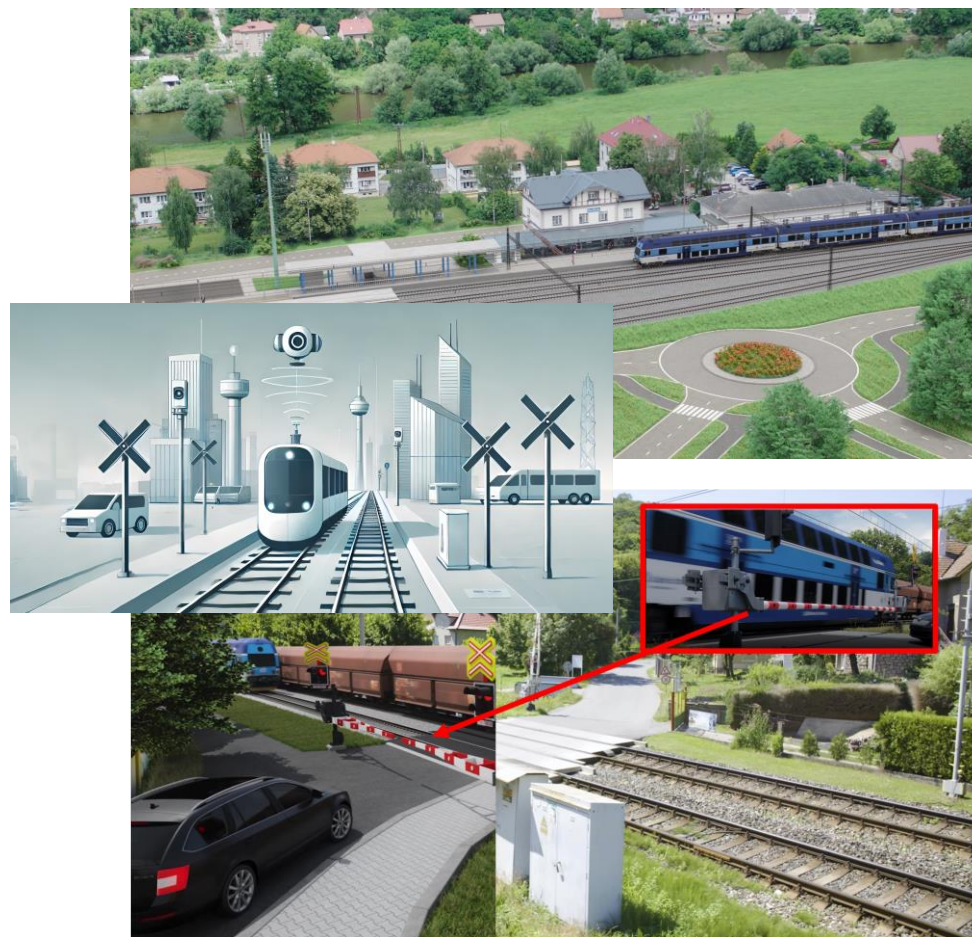


Data for Machine Learning of the Anticollision System

Size: 5 team members, 2 years project

IXPERTA and IT4Innovations developing the simulation system for machine learning of anticollision system with obstacles on the track:

- › Simulated data with exceptional events on the railways.
- › Data which cannot be simulated in real environment.
- › Weather condition and exceptional events.
- › Data for optical and infra cameras, LIDAR/RADAR
- › Synchronized streams, timestamps and train positions on the simulated track.

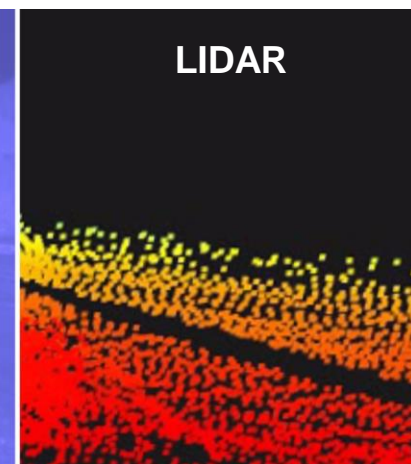
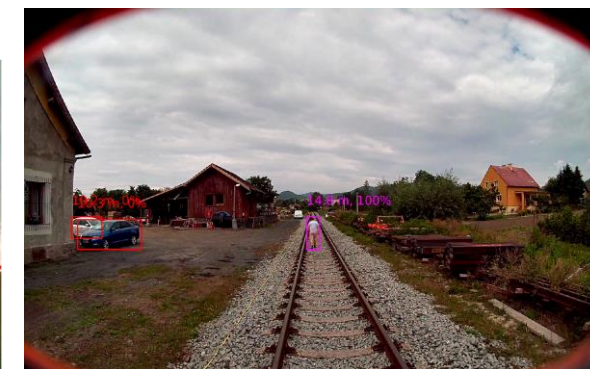


Track Obstacles Detection

Size: 5 team members, 2 years project

IXPERTA delivers solution to manage remote software updates of high-tech devices in laboratory networks:

- › Objects recognition on the track from size 30cm size.
- › Recognition engine with optical and infra cameras and LIDAR.
- › AI separates obstacles from “safe” objects like papers, plastic bags, etc.





Thank you for your attention

